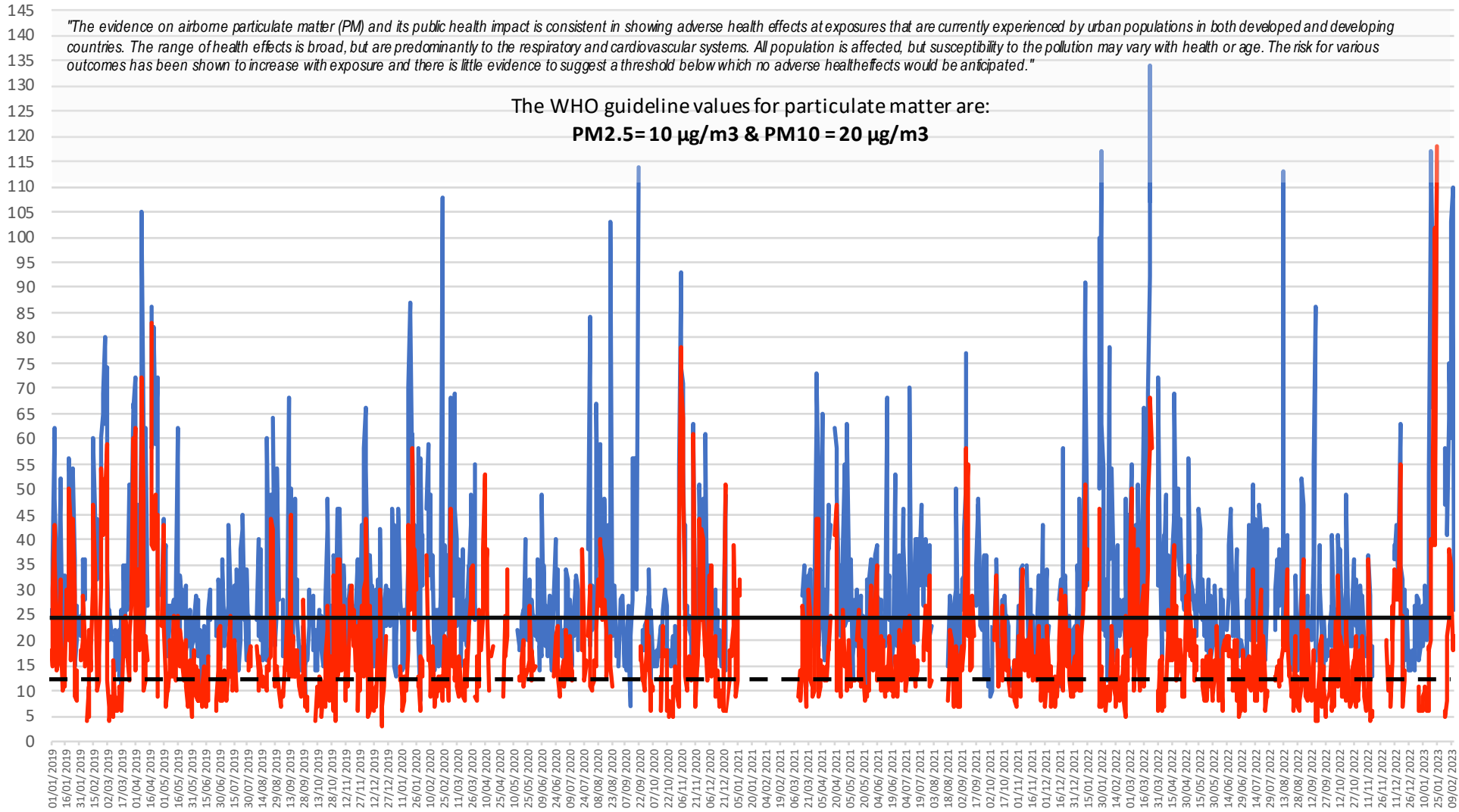


SANDY ROADSIDE AIR QUALITY January 2019 -February 2023

ug/m³

--- PM2.5 WHO Limit
 — PM10 WHO Limit



"The evidence on airborne particulate matter (PM) and its public health impact is consistent in showing adverse health effects at exposures that are currently experienced by urban populations in both developed and developing countries. The range of health effects is broad, but are predominantly to the respiratory and cardiovascular systems. All population is affected, but susceptibility to the pollution may vary with health or age. The risk for various outcomes has been shown to increase with exposure and there is little evidence to suggest a threshold below which no adverse health effects would be anticipated."

— PM10 particulate matter (Hourly measured)

— PM2.5 particulate matter (Hourly measured)

DATA: DEFRA UK AIR DATA